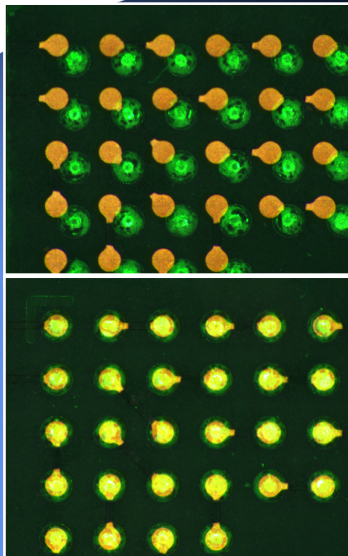
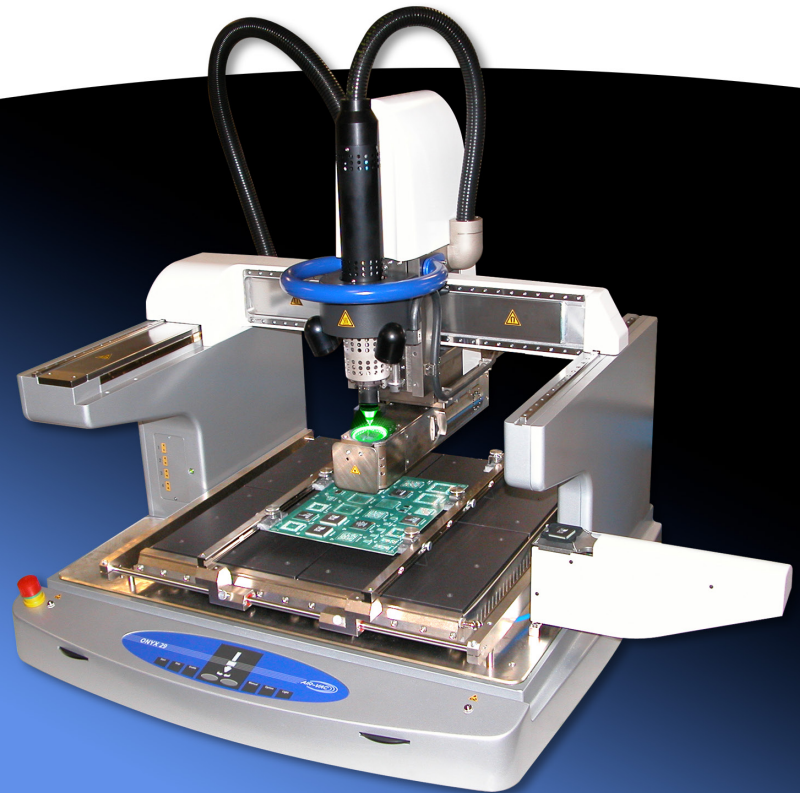


## High Performance, Robotic SMT Rework, Assembly & Production

THE HIGHEST LEVEL OF PLACEMENT ACCURACY IN THE INDUSTRY



BGA Corner: Unaligned/Aligned



### Precision Placement Accuracy

Linear encoders and a “worm gear” z-axis drive provide an industry leading 9 micron placement accuracy with no mechanical calibration ever!

### Robotic Rework System

Seven (7) automated axes virtually eliminates operator involvement.

### Vision System

Beam-splitter, color camera with zoom lens and programmable LED's (green/top-white/bottom), simplify the alignment process.

### Board Image

- All component locations are scanned for the ability to select the location(s) and processes to be run.
- Multiple component locations can be reworked in a single cycle.

### Thermal Repeatability

- A heater stabilization routine heats the machine if it is cold or cools the machine if it is hot.
- In addition, temperature-based board preheat provides excellent thermal repeatability from run-to-run and machine-to-machine.

### Non-Contact Site Cleaning

- Proprietary, non-contact site cleaning nozzle provides heat and vacuum needed to remove residual site solder after component removal.
- A vacuum sensor automatically and continuously adjusts the vacuum tip height above the board.
- Eliminates pad and mask damage caused by mechanical contact solder wick.

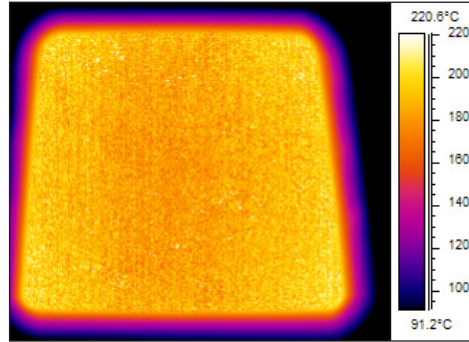
### Program Development Wizard (PDW) Software

Adjust-on-the-fly feature creates thermal profiles for new applications. Profiles are automatically created.

# High Performance Automation Rework



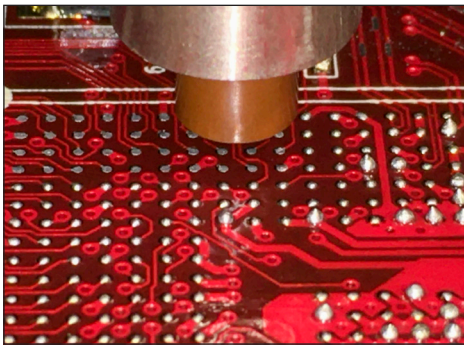
Direct View HD Camera System



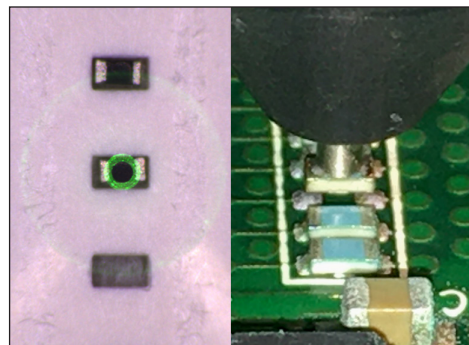
Bottom Heating Panels: Proprietary Technology with Thermal Uniformity.



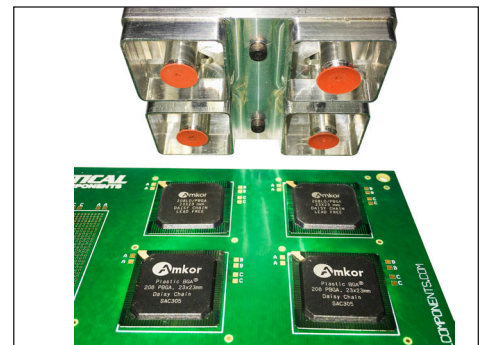
Board Image for Process Development



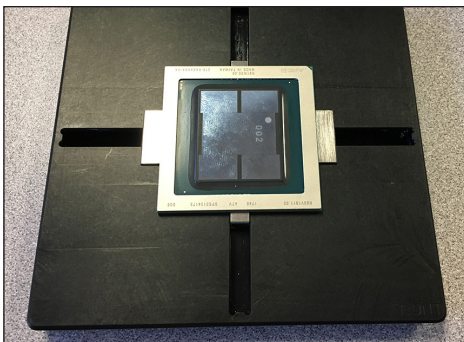
Non-Contact Site Cleaning



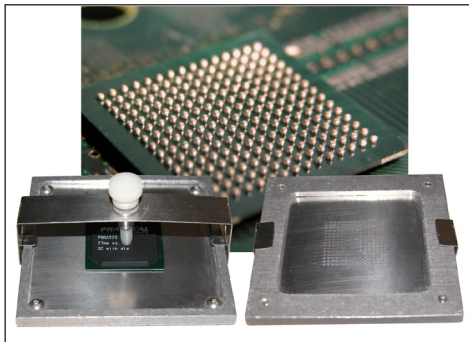
Micro-Component Rework



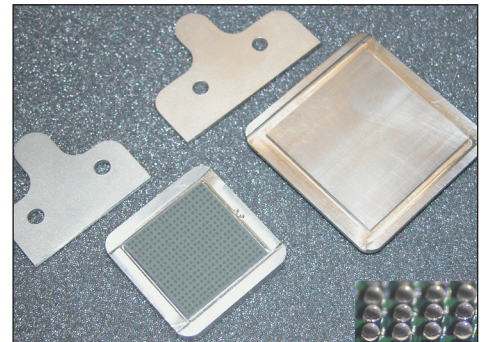
Standard and Custom Nozzles



Adjustable Component Pickup Tool



Solder Paste on Device Stencil Adapter



Dipping Kit: Tacky Flux/Solder Paste

## Options

- Board IR Sensor with Laser Pointer (0029.12.040)
- Site Cleaning System (Std/Micro Nozzles) (0029.03.012)
- Adjustable Component Pickup Tool (AU6LGA47R)
- Direct View HD Camera System (0029.04.044)
- Fume Extraction Manifold (0029.22.010; with Vacuum Unit)
- Flux/Paste Dipping Kit (FASET1)
- Paste-On-Device Stencil Adapter (0024.24.111)
- ESD-Safe Workstation with CPU Holder (1003.05.010)
  - Monitor Stand (1003.05.005)
  - Locking Drawer (1003.05.007)
- Four (4) additional Thermocouple Ports (300.00.504)
- Recommended Spare Parts (0029.00.040)

